

Effective spreading widths up to 18 m



SuperFlow pendulum seeder/spreaders





Superflow seeder/spreaders

Symmetric spread pattern for optimum overlap

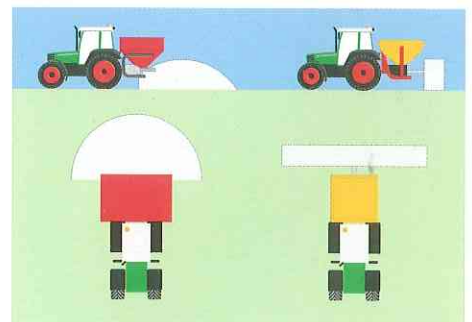
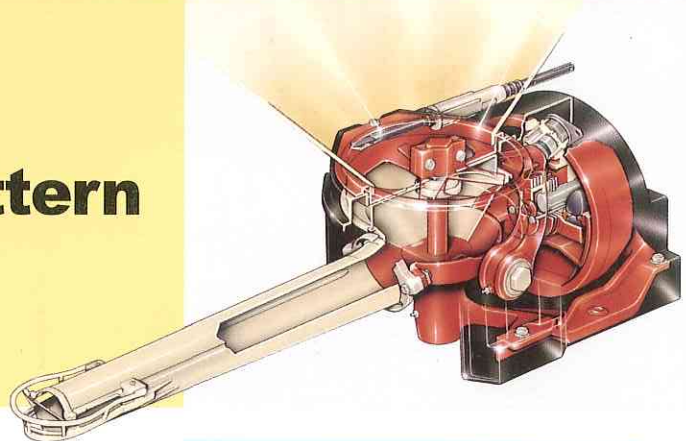
More than one million machines sold prove that the Vicom pendulum seeder/spreader is the first choice wherever the demand is for maximum accuracy in fertiliser application. Spreading quality and ease of operation of this unique machine are unequalled - now as in the past. The pendulum movement of the spout ensures that the application rate is always identical on both sides. This results in an excellent overlap.

Minimum wind influence on the spreading pattern

The to-and-fro movement of the spout causes the fertiliser to be thrown to the left and the right hand side only, never to the front and a short distance only to the rear. Wind influence is therefore insignificant and the tractor does not get covered with fertiliser.

Easy setting of the application rate

The plastic scale allows continuous adjustment of the application rate in kg per hectare, so the risk of spreading errors is minimal. Using the reference chart and the dial you can determine the desired quantity of fertiliser for every spreading width and forward speed.



Disc spreader

Pendulum spreader



Easy setting of the application rate



Border spreading with border spreading plate



Tramline border spreading with tiltable headstock



Easy calibration

Calibration much simplified

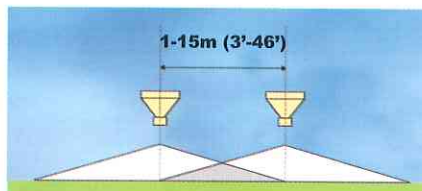
A specially designed calibration container is available making it no longer necessary to remove the spout for calibration.

Gentle handling of fertiliser

The agitator ensures an even material feed to the spreading unit, so there's no risk of the fertiliser being crushed.



Agitator ensures even feed of the fertiliser



The cone shaped spreading pattern reaches from tractor wheel track to tractor wheel track giving total overlap of the spread surface

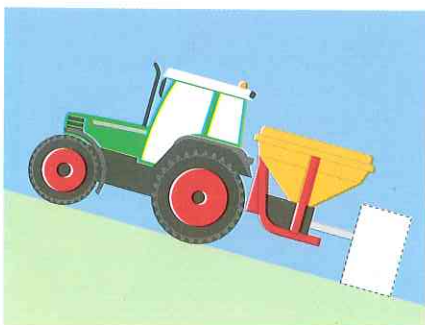
Border spreading made easy!

Spreading along field edges and tramline border spreading is no problem at all - thanks to the border spreading plate and the tiltable headstock. When working along the field boundary you can limit the spreading width using the border spreading plate and when on the tramline you just tilt the spreader 7° if you have to operate near fences or ditches. The mechanically or hydraulically tiltable headstock makes this exceptionally simple.

Built for a long service life

SuperFlow seeder/spreaders from Vicon fulfill all requirements for a long service life:

- the optimized frame with no corners where fertiliser can accumulate
- the glass fiber re-inforced polyester hopper, which is unaffected by aggressive types of fertiliser
- the metering disc made from stainless steel
- the unique Duracoat powder painting system for exceptional corrosion resistance of spreading unit and frame
- the bearings of the spreading unit have easily accessible grease nipples for maximum ease of maintenance.



Accurate spreading also on slopes

Low filling height

Refilling fertiliser is no problem at all - the hopper can be easily moved under a tipping trailer or silo or filled by hand.



Low filling height

SuperFlow 04 series

Spreading widths up to 18 m



Step-up gearbox

The latest generation of 04-series pendulum spreaders, with hopper capacities from 600 to 1650 litres, allows the previous maximum working width of 12 m to be increased to 15 m and even 18 m.

Up to 14 m (42')

These are the base models of the new range with working widths from 9 m to 14 m.

The new frame permits a quick and simple conversion to the 15 m or 18 m version.



Quick fitting of deflector plates for 18 m spreading width

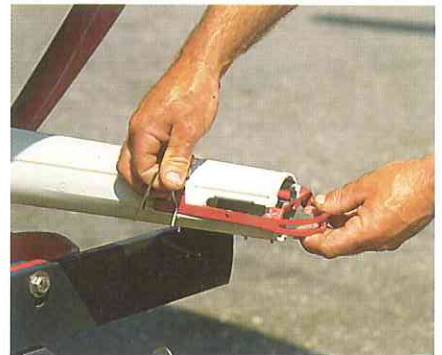
Up to 15 m (46')

When operated by a tractor running at 540 rpm pto speed the spreaders can be fitted with a step-up gearbox increasing the speed of the spreading unit from 540 to 620 rpm.

Tractors with 750 or 1000 rpm pto facility do not require this extra gearbox. In this case the pto speed is simply reduced to 620 rpm.

Up to 18 m (60')

This can be achieved with all new 04 series spreaders by fitting two stainless steel deflector



Spout band for 18 m spreading width

plates as well as a special spout band. Depending on the tractor pto speed the step-up gearbox is required.

The spout band deflects the fertiliser partially to the bottom where they bounce off the stainless steel deflector plates. The result is a "flat top" spreading pattern whose "inclined" sections completely overlap if the 18 m distance between passes is utilized to the full.



SuperFlow 03 series

From 200-500 litres hopper capacity

PS 403



PS 303



VITI PS 403

The spreader types PS 203/303 and PS 403/503 are unchanged. These spreaders are not suitable for spreading at 18 m (60'), but can reach 15 m (46') if a tractor with 750 or 1000 rpm pto is available. With hopper capacities of 200, 300, 400 and 500 litres the 03-series is the ideal solution for small farms and special applications.

VITI PS 403/503

This special spreader version with only 115 cm hopper width has been designed for spreading in orchards (400 or 500 litre hopper capacity).



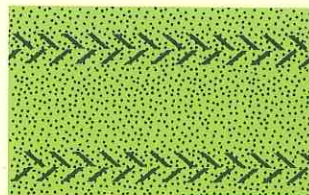
Varimeter on-board computer

The Varimeter on-board computer allows the metering disc to be adjusted from the tractor cab. Forward speed is continuously checked by a wheel sensor or by radar and transmitted to the Varimeter system which in turn ensures a constant application rate whatever the forward speed. The consequence is an absolutely uniform spreading pattern in the direction of travel. The quantity of fertiliser can be increased or decreased at any time during work.

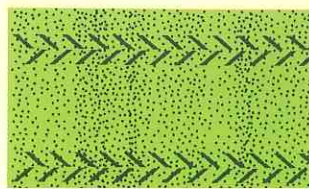
Easy control

Operators will find the Varimeter exceptionally easy to operate. All you have to watch over is a control panel with its clearly understandable display

Spreading pattern
with Varimeter



Spreading pattern



Optional equipment



Trailer frame

Hydraulic remote control

Allows the metering disc to be opened and closed from the driver's seat (one single acting control valve required).

Hydraulically tiltable headstock for border spreading

This optional extra can be used tramline border spreading.

Border spreading plate

This plate prevents the fertiliser being spread beyond the field boundary. Can be folded from working into transport position.

Grid

A grid fitted inside the hopper prevents lumps of fertiliser penetrating the feed mechanism.

Fine seed insert

Shuts two of the three openings of the metering device for the application of small quantities of fine seeds.

Hopper cover

Protects the fertilizer from moisture and dirt. For filling the hopper the cover can be easily folded.

Calibration container

Allows calibration tests to be performed with spout in place.

Hopper extension plates

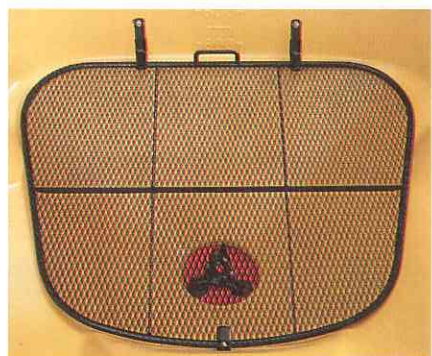
To increase hopper capacity.

Wheel set

This set of pivoting wheels allows the spreader to be easily moved when detached from the tractor.

Trailer frame

Available for PS 604 and PS 754. Also available with wide tyres.



Grid



Calibration container



Set of pivoting wheels



Hydraulically tiltable headstock

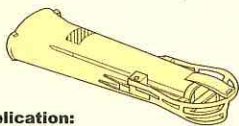


A choice of spreading spouts

A wide variety of applications



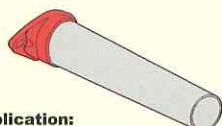
SHORT SPREADING SPOUT



application:
small spreading widths
spreading width: 4-8m (13'-26')



BAND SPREADING SPOUT



application:
orchards
spreading width: 2-10m (11'-32')



BAND SPREADING SPOUT



application: pesticides
spreading width: 0,75-4,5m (3'-14')



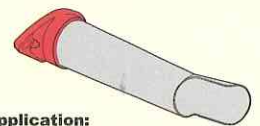
NARROW SPREADING SPOUT



application: orchards, parks,
narrow spout widths, spreading
width: 1,5-2m (5'-11')



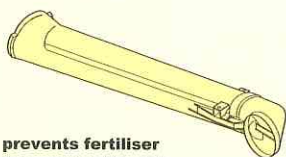
A-SYM. SPREADING SPOUT (left)



application:
fish-farms, spreading on dikes
spreading width: 4-6m (13'-20')

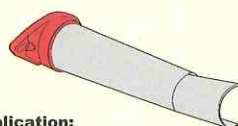


BOUNDARY SPOUT



prevents fertiliser
from spreading into
ditches or hedges

A-SYM. SPREADING SPOUT (right)



application:
fish-farms, spreading on dikes
spreading width: 4-6m (13'-20')

SALT/GRIT SPREADING SPOUT



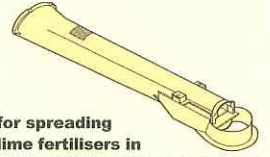
application:
road building/salt application on
icy roads and pathways,
spreading width: 5-6m (16'-19')

SALT/GRIT SPREADING SPOUT



application:
road building/salt application
on icy roads and pathways,
spreading width: 2-4m (11'-13')

LIME SPREADING SPOUT



for spreading
lime fertilisers in
combination with a windshield
6m (19'); excl. 203/303 models



Technical specifications

Model	203*	303*	403*	403*	503*	503*	604*	754**	804*	954**	1004*	1154**	1354**	1654**
		VITI			VITI									
Basic unit		203			403				604	754	604	754	754	754
Hopper capacity (ltr)	175	275	400	400	500	500	600	750	800	950	1000	1150	1350	1650
Hopper width (cm)	105	105	145	115	145	115	175	175	175	175	175	175	175	175
Filling height, 3-pt types (cm)	77	92	89	89	101	101	96	96	106	106	116	116	125	141
Weight 3-pt types (kg)	75	80	121	121	126	126	130	151	155	158	165	171	178	184
Pto speed (rpm)	540	540	540	540	540	540	540	540	540	540	540	540	540	540

* Both powders and granules ** Granules only

Specifications North America

Model	203	303	403	503	604	754	804	954	1004	1154	1354	1654
Hopper (lbs)	400	600	950	1200	1400	1650	1900	2100	2400	2550	3000	4150
Cu. (ft)	5.9	8.9	14.1	17.6	21.2	26.5	28.2	33.5	35.3	40.6	47.7	58.3
B.U.	4.7	7.1	11.2	14.0	16.9	21.2	22.5	26.8	28.2	32.4	38.1	46.2
Filling height	30"	36"	35"	40"	38"	38"	42"	42"	45"	45"	49"	55"
Spreading width	3'-46"	3'-46"	3'-46"	3'-46"	3'-46"	3'-60"	3'-60"	3'-60"	3'-60"	3'-60"	3'-60"	3'-60"
Machine (lbs)	163	176	267	278	320	335	344	351	380	385	395	408
Cat.	1	1	1/2	1/2	2	2	2	2	2	2	2	2

This documentation is not binding. Availability of models, specifications and optional equipment may differ from country to country. Please consult your local dealer. Specifications and design are subject to change without notice. Printed in Holland. © Kverneland Group



Vital Parts

The Kverneland Group regards the sale of each machine as the start of a long-term and valuable relationship. To support the relationship, we provide the vital high quality spare part and an efficient spare part service.

Our parts are designed to ensure reliability, safety and an optimal performance of the machines. The quality lies in the innovative construction work and in the production processes at our production sites. The spare parts are available in close proximity to you; at our dealership in your area as well as at our distribution centres. We maintain high availability of spare parts to ensure minimum operational disruption at your end.

You can depend on the Kverneland Group to offer a premium service. It's vital for us!

