

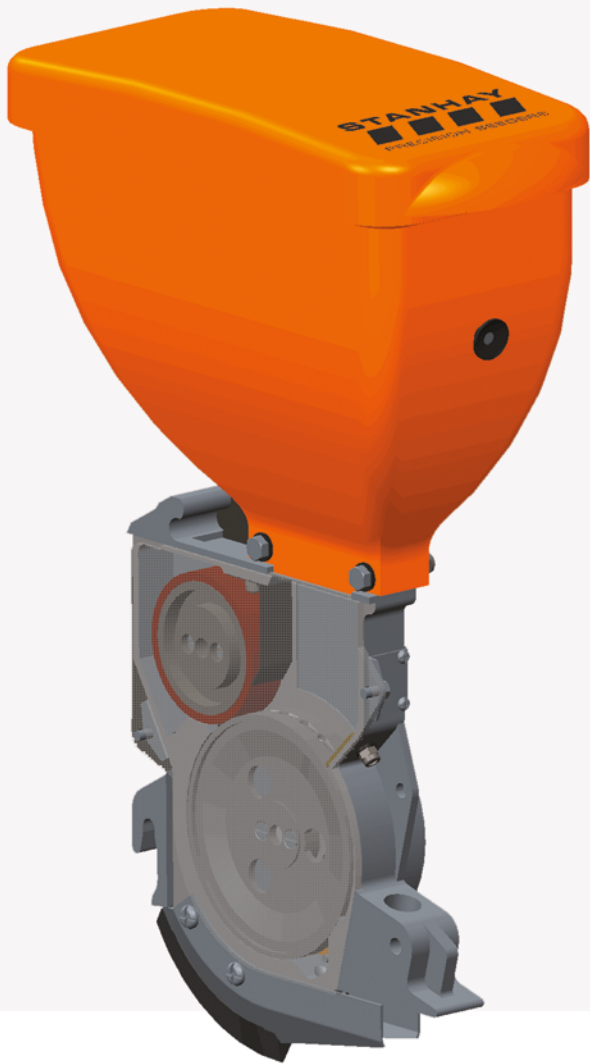


## The Electric Drive Cell Wheel Drill from Stanhay

**Stanhay Webb Ltd**  
17 Limesquare Business Park  
Alma Park Road  
Grantham NG31 9SN

**Contact Us**  
+44 (0)1476 542 875  
info@stanhay.com  
www.stanhay.com





Stanhay Nine

## In cab control of every aspect of your precision drilling

The field proven cell wheel metering unit from Stanhay allows accurate placement of any pelleted or regular shaped raw seed and is particularly well suited to Sugar Beet.

With the new Nine, each metering unit is controlled with its own individual electric motor, allowing precise infinitely variable seed spacing while making it easy to turn off individual rows for tramlining, section control or changing the spacing on rows adjacent to tramlines.

All settings are adjustable from the terminal in the tractor cab where seed spacing and tramline sequences are entered, while clod deflectors, seed press wheels and easy depth controls ensure your crop gets the best possible start.

← The Nine metering unit

### Introducing the Nine

With no chains, sprockets or gearboxes and a host of further functionality not possible with conventional landwheel driven drills, the Stanhay Nine is a high performance, low maintenance drill for today's professional grower.

### Specifications

- Electric Drive Cell Wheel
- ISOBUS Compliant
- Automatic Tramlining
- Compatible with GPS guidance and Section Control
- Spring Loaded Arm Covers
- Hydraulic Disc Markers
- 4 – 18 Rows
- Rigid, Folding or End Tow Toolbars

### Options

- Seed Press Wheels
- Telescopic Clod Deflectors



### Features

- A** Telescopic clod deflector
- B** Electric motor drive
- C** Seed press wheels and sprung arm coverer
- D** Easy depth control
- E** Zero pressure wheels

Stanhay Webb Ltd  
17 Limesquare Business Park  
Alma Park Road  
Grantham NG31 9SN

Contact Us  
+44 (0)1476 542 875  
info@stanhay.com  
www.stanhay.com



**STANHAY**  
PRECISION SEEDERS