

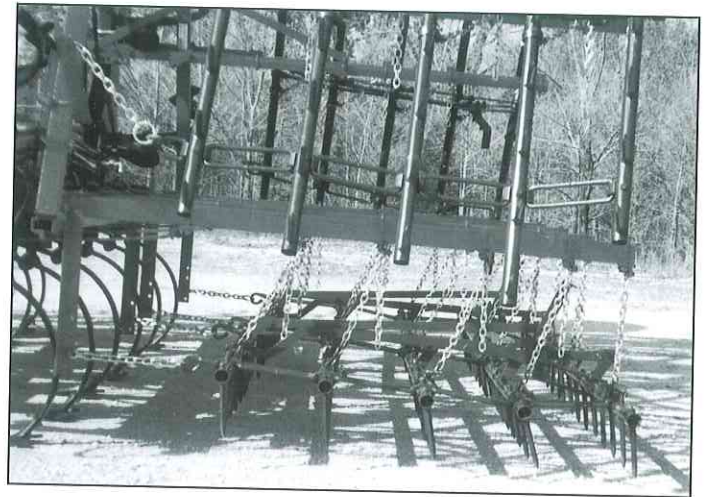
5-BAR ATTACHMENT FOR FIELD CULTIVATORS, DISCS & CHISEL PLOWS



DM-5 CARRIER ARMS

Designed to mount 5-bar harrows to tandem discs where there is no frame to mount to; also mounts to many other discs, field cultivators & chisel plows.

Harrows are hung from chains & pulled by draw angles mounted to crossbar, not your unit!



Universal mounting brackets fit many sizes of tubing and unique drawbar crossbar allows for mounting over odd-sized hinges, etc.

Designed for use with ANY style of our 5-bar harrows, but recommended with either our Heavy Duty or our Super Heavy Duty FB series harrows (PG. 12 & 13).

CULTI-LEVELING ATTACHMENT FOR FIELD CULTIVATORS

Now—Prepare a smoother, cleaner, better seed bed with less work, with the Culti-Leveling Attachment.

The 3-bar attachment features three staggered tooth bars. (PG. 16)

Selection of 4 models of carrier arms, for use with the 3-bar coil tine harrow sections.

Full Floating—Each harrow section is independently mounted. This allows free rise and fall and follows the contour of the ground overcoming any problems of clogging and allows the trash to flow freely through the harrow section.

The three or four bar Culti-Leveling Attachment prepares an excellent seed bed by leveling and breaking up the ridges in one operation. This conserves essential ground moisture.

CA-7 CARRIER ARMS:

Designed to mount to rear beam of 3" square beam field cultivator. For 3-bar Coil Tine Section (PG 16).



CA-12 Carrier Arms with CC-4 series coil tine sections.

CA-8 CARRIER ARMS:

Designed to mount to rear beam of a 2 1/2" square beam field cultivator. For 3-Bar (PG. 16)

CA-9 CARRIER ARMS:

Designed to mount to rear beam of a 4" square beam field cultivator. For 3-Bar (PG. 16)

CA-12 CARRIER ARMS:

Are special Heavy Duty Spring loaded, designed to mount the rear beam sizes 2 1/2", 3", 4", 5" and 6" square beam field cultivators. For use with 3 or 4 Bar Coil Tine Harrows (PG. 16)

SUPER HEAVY DUTY FLEXIBLE REVERSIBLE HARROW

For trashy fields, pulverizing, cultivating, breaking up clods and destroying early weeds. The flexibility allows the individual tooth bars to pass over obstructions while the other bars stay on the ground. When the harrow is drawn from the front the teeth are vertical for cultivating and penetrating deep into the soil. When drawn from the other end, the tooth angle is preset for cleaning and smoothing.

TOOTH BARS

1.9" O.D. High carbon heavy duty pipe for greater strength at high speed tractor operation and cultivating.

CONNECTING LINK

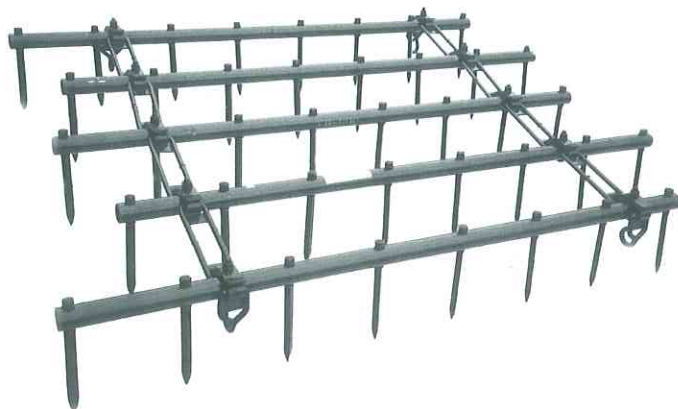
9/16" Specially welded for extra strength and less wear with 3/8" clamp.

DRAW HOOKS

9/16" Designed with open ends toward the ground to reduce unhooking.

TEETH

5/8" square material x 7 1/2" long with a 9/16" shank high carbon tooth - each tooth is locked on with a lock washer and nut. Teeth are reversible and replaceable.



SPECIFICATIONS

Model	Description	No. Teeth	Width (feet)	Weight (lbs.)
FB-500	Flexible-Reversible Harrow	40	5'	136
FB-550	Flexible-Reversible Harrow	40	5'6"	140
FB-600	Flexible-Reversible Harrow	40	6'	147
FB-700	Flexible-Reversible Harrow	50	7'	169

SUPER HEAVY DUTY FLEXIBLE LEVER HARROW

Breaks up clods, crusts, pulverizes, smooths and cultivates, destroying the early weeds before they start to grow.

SELF-CLEANING, NON-CLOGGING

The flexibility permits it to pass over trash or rocks.

LEVER ASSEMBLY

Exclusive lever design permits setting the teeth at any angle, yet allowing full flexibility in any position.

TOOTH BARS

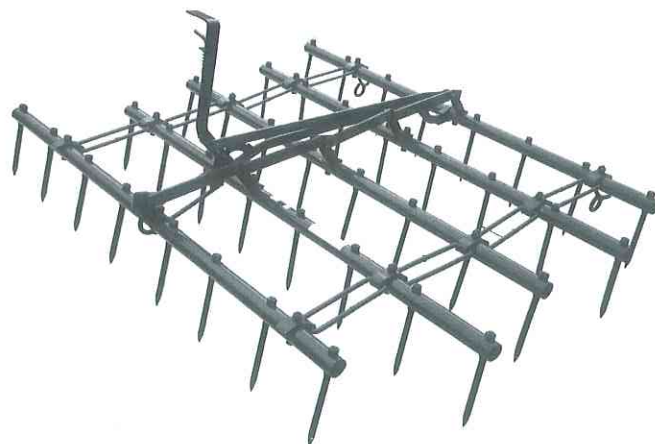
1.9" O.D. High carbon steel pipe, "super" strong for tough use.

CONNECTING LINKS

9/16" Welded for extra strength with 3/8" clamp.

TEETH

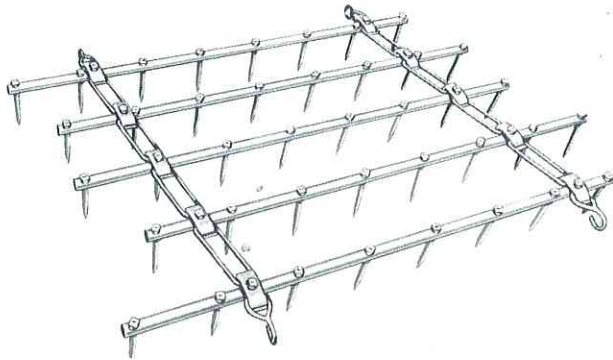
5/8" square material x 7 1/2" long with a 9/16" shank high carbon tooth - each tooth is locked on with a lock washer and nut. Teeth are reversible and replaceable.



SPECIFICATIONS

Model	No. Teeth	Width (Depth)	Weight (Lbs.)
OE-550	40	5'6"	158
OE-600	40	6'	165
OE-700	50	7'	188

HEAVY DUTY FLEXIBLE REVERSIBLE HARROW



SPECIFICATIONS

Model	Description	No. Teeth	Width (feet)	Weight (lbs.)
FB-5	Flexible-Reversible Harrow	40	5'	96
FB-55 1/2	Flexible-Reversible Harrow	40	5'6"	100
FB-645	Flexible-Reversible Harrow	45	6'	106
FB-6 1/2	Flexible-Reversible Harrow	45	6'6"	111
FB-7	Flexible-Reversible Harrow	50	7'	121
FB-8	Flexible-Reversible Harrow	60	8'	138

For trashy fields, pulverizing, cultivating, breaking up clods and destroying early weeds. The flexibility allows the individual tooth bars to pass over obstructions while the other bars stay on the ground. When the harrow is drawn from the front, the teeth are vertical for cultivating and penetrating deep into the soil. When drawn from the other end, the tooth angle is preset for self-cleaning and smoothing

TOOTH BARS

1 5/8" O.D. High carbon heavy duty pipe for greater strength at high speed tractor operation and cultivating.

CONNECTING LINKS

9/16" Specially welded for extra strength and less wear.

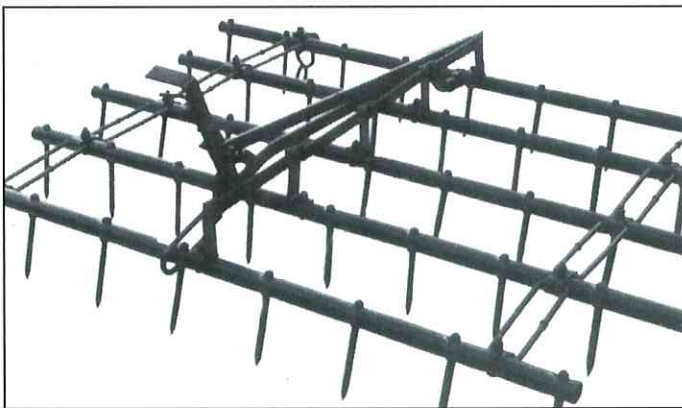
DRAW HOOKS

9/16" designed with open ends toward the ground to reduce unhooking.

TEETH

High carbon steel, hammer-forged to diamond hard point for hard use in all soil conditions. The teeth can be used to cultivate, pulverize, smooth and break-up crust and clods. Each tooth is locked on with a lock washer and nut. We guarantee our teeth to outlast any other teeth of equal weight.

HEAVY DUTY FLEXIBLE PIPE BAR LEVER HARROW



Breaks up clods, crusts, pulverizes, smooths and cultivates, destroying the early weeds before they start to grow. Cultivates corn, beans, potatoes and other row crops.

SELF-CLEANING, NON-CLOGGING

The flexibility permits it to pass over trash or rocks.

LEVER ASSEMBLY

Exclusive lever design permits setting the teeth at any angle, yet allowing full flexibility in any position.

TOOTH BARS

1 5/8" O.D. High carbon steel pipe, extra strong and resistant to wear for high speed harrowing.

CONNECTING LINKS

9/16" Welded for extra strength.

TEETH

High carbon steel, hammer-forged to diamond hard point for hard use in all soil conditions to cultivate, pulverize, smooth and break-up crust and clods. Each tooth is reversible and replaceable. Each tooth is locked on with a lock washer and nut. Guaranteed to outlast any other tooth of equal weight.

9/16" DRAW HOOKS

Designed with open ends toward the ground to reduce unhooking.

SPECIFICATIONS

Model	No. Teeth	Width (Depth)	Weight (Lbs.)
OE-55 1/2	40	5'6"	118
OE-645	45	6'	122
OE-6 1/2	45	6'6"	129
OE-7	50	7"	137