



MICRON

Weed Management

BUSH AND TREE CROPS

Vehicle mounted sprayers for olives, nuts, vineyards, bush and tree crops



Landrooter

Precision agriculture





Landrooter

PRECISION AGRICULTURE



LANDROOTER is software connected to the MICRON vehicle mounted spraying machines, communicate the key parameters of the machine in real time to ensure a PRECISE AND

offering the farmer an intelligent spraying solution. The sprayer electronics control and CORRECT application, storing the information instantly for analysis and use

MANAGEMENT TOOLS

Find and create your own fields.



Define your plant protection products.



Manage your workers and vehicles.



Create documentation about your activities in one click or modify the information as you desire.

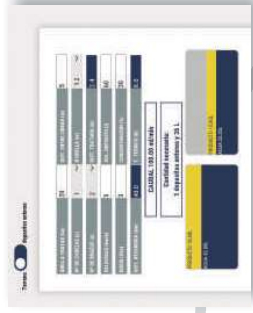


Receive information automatically with real time data of the applications made.

- Analyse and know precisely how the product has been applied to the field.
 - Which zones have been treated.
 - Vehicle speed was correct throughout the application.
 - Status of the sprayer in real time.
- Have of all the necessary information in your hand to optimize the tasks you perform in the field.

USER TOOLS

The application has a WIZARD to assist in sprayer mixing and calibration to avoid errors. WIZARD shows how to prepare the mixing rates of product and water for the area to be treated.



The software communicates with the sprayer and the user in real time and controls the position, speed and various parameters of the sprayer. In this way the user can visualize during the application the quality of the work and receive safety alerts to correct any issues instantly. This guarantees the user an accurate and reliable application and the best spraying performance to help maximise the yield of the crop.



The software automatically recognizes when the machine enters and leaves the field, and by means of an automatic START / STOP function, it starts sending information to the user. When leaving the field, it automatically sends the information to the cloud and is available in the digital platform for detailed analysis and traceability.

1

2

3

4

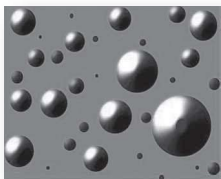


CONTROLLED DROPLET APPLICATION (CDA) TECHNOLOGY

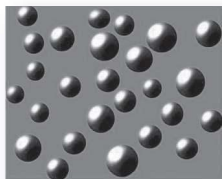
The secret of efficient spraying lies in an even spray droplet size and better liquid coverage on the target. Most conventional spraying machines employ a hydraulic nozzle. This application method is rather inefficient as it breaks up the spray liquid very unevenly and produces a very wide range of droplet sizes. It can waste up to 50% of the spray mix, increasing costs and unnecessary contamination of the environment.

COMPARISON OF SPRAY DROPLETS

HYDRAULIC PRESSURE



MICRON ROTARY ATOMISER



Invented by Micron, **Controlled Droplet Application (CDA)** produces only the optimum sizes of spray droplet for the particular application. This is achieved by specifically designed spinning disc rotary atomizers which break up the spray liquid very evenly, resulting in a narrow range of spray droplet sizes and the best coverage.

REAL CASE COMPARISON



MICRON CDA ADVANTAGES

• **OPERATIONAL EFFICIENCIES**

- Reduced volume of spray = **cost savings**
- Even droplet distribution and size = **better control**
- Lightweight sprayers = less soil compaction
- **Faster** spraying operation. **Less time** spent refilling

• **IMPROVED CHEMICAL EFFICIENCY**

- CDA technology **improves target coverage and spray droplet retention**

• **SAFER SPRAYING**

- **Less operator errors** due to fatigue
- **Less exposure** of the operator to the chemical

• **LESS ENVIRONMENTAL IMPACT**

- **Over 90% less drift**
- **Reduced chemical and water** requirement
- **Lower contamination** of soil

🍷 BUSH AND TREE CROPS

AGILITY WITHOUT SHIELDS



NEW 60 L TANK



CONTROL PANEL



NEW MOTOR HIGHER DURABILITY

PATENTED



👁️ SPRAY-GUARD

This model is specially designed for mature olives and fruit trees. Using larger controlled drop sizes to decrease the risk of spray drift, the farmer can take advantage of the agility of this sprayer.

No need to contact the trunk of the tree to make the application, it is much easier to drive the vehicle even for two sided application with two spray heads

Working width of the Spray-guard is 130cm and the recommended vehicle speed is between 4-8 km/h.



TOTAL PROTECTION WITH SHIELDED SPRAY EQUIPMENT

Versatile shielded sprayers for olives, nuts, vineyards and bush and tree crops.

Incorporating shields to fully contain the spray, Spray-flex and Spray-dome are ideal for applications where chemical contact with the crop is not wanted. They minimize any risk of spray drift, enabling spraying to be carried out in as wide a range of weather conditions as possible. It is particularly suited for those applications where it is absolutely critical to prevent spray contamination of the crop or the surrounding area.

The sprayers are designed to be operated at vehicle speeds of 4 - 10 kph.

○ SPRAY-FLEX

Spray-flex range offers an efficient and targeted method of weed control round the base of vines, other bush crops and young trees

The sprayer features a dome shaped brush design which rolls closely around the base of vines, bushes and trees to ensure maximum weed control. Due to its very flexible structure, the sprayer is ideal for use in young plants. Also available with optional vinyl cover for added security against drift.

∅	40 cm	60 cm	90 cm
---	-------	-------	-------



○ SPRAY-DOME

Spray-dome's hard wearing shields offer durability and longevity in application and make the sprayer particularly suited for more demanding spraying tasks including weed control round mature olive trees, fruit trees and nuts, as well as amenity areas such as fence lines, footpaths and along buildings.

∅	40 cm	60 cm	90 cm	120 cm
---	-------	-------	-------	--------



CONTROLLING WEEDS BETWEEN THE ROWS



○ SPRAY-DOME+

Featuring extendable wings, the Spray-dome+ range has been specifically designed for treating weeds growing between rows of trees. As such, the sprayers are highly suitable for use in almonds, pistachios, walnuts and other tree crops.

The range includes a choice of adjustable width models which can spray widths from 1.5 m to 4.9 m. For wider centre rows, the units can be easily fitted with Spray-dome arms on each side which can further extend the spray width up to 7.5 m.

MODEL	1524	3049
∅	1.5 to 2.4 m	3.0 to 4.9 m



○ SPRAY-MISER

The Spraymiser Boom features a shielded design to minimise any risk of spray drift. The Boom can be between 0.6 m-2.4 m spray widths according to the number of heads used.

The CDA option features a CDA head and a recirculating system for enhanced chemical efficiency. A flow control system monitors the correct working of each CDA atomiser.



*Spray-flex, Spray-dome, Spray-dome+ and Spray miser sprayers are also available in HiFlo version if required.

FIELD CROPS

VARIDOME: efficient band sprayers

The Varidome range of advanced band sprayers incorporates a fully shielded design to help growers improve weed control, reduce their dependence on the use of selective products and cut herbicide use and cost by offering a highly targeted and accurate spraying solution.



HAND HELD MODELS

HERBI: hand-held CDA sprayers for weed control

The Herbi range of hand-held CDA sprayers for herbicide application in smaller areas, incorporates models for all weed control situations including band treatment, shielded applications and spot spraying.



NON-DRIFT CONTROL

WEEDWIPER: unique Non-Drift weed control

Effective weed control with a wiper ensures that only the target weed comes into contact with the herbicide as the product is directly transferred onto the plant by contact without risk of spray drift. The Micron WeedWiper also has unique non drip technology.

