

KASCO'S NO-TILL DRILLS

KASCO INNOVATION...KASCO VALUE



KASCO
MANUFACTURING CO., INC.

170 West 600 North
Shelbyville, Indiana 46176
800-458-9129
www.kascomfg.com

The ECO-DRILL

Designed with Versatility in mind,
The Eco-Drill offers more
alternatives than any other single
seeder on the market today.

Utilizing a unique Seed Metering
System, The Eco-Drill is capable
of handling a wide variety of
seed types...All with the
Same Seed Box.

CLOVER...TIMOTHY...ALFALFA
...OATS...WHEAT...CORN...
SUNFLOWERS...SOYBEANS...
AUSTRIAN PEAS...
And Many More!



**KED-96 8' ECO-DRILL
WITH OPTIONAL LEGUME BOX**

16" Straight Coulters slice the ground,
followed by 13" Concave Openers
to form a Seedbed Trench.

A Three-Speed Transmission and Precise
Adjustment of the Seed Metering Slots
Allow a Wide Range of Seed Rates.

The Gear Box is Easily Accessible
for Quick Changes.

A Full Row of Heavy Duty Cultipacker
Wheels follow up to ensure premium
Seed-to-Soil Contact.



<u>MODEL</u>	<u>DESCRIPTION</u>	<u>WIDTH</u>	<u>ROW SPACING</u>	<u># of ROWS</u>	<u>WEIGHT</u>
KED-72	No-Till Drill. 3 Point (Cat. I/II)	6'	8"	9	1385#
KED-96	No-Till Drill. 3 Point (Cat. I/II)	8'	8"	12	1855#

KASCO
MANUFACTURING CO., INC.

800-458-9129
www.kascomfg.com

The VALU-DRILL



Model KVD-72 6' Valu-Drill

For Those Who Want a Simple, Rugged Drill with Extra Value, the Valu-Drill is the Perfect Choice.

Kasco's Valu-Drill is constructed of a heavy duty 3 x 3 Tube Welded Frame, with 14" openers and oversized bearings. The Valu-Drill is close-coupled, so it's easier to lift and can be used on smaller tractors. It works well in either No-Till or Worked Soil.

All of the openers and the cultipackers are spring-loaded. Depth control is quick and easy.

The Seed Metering System of the Valu-Drill is driven by the rear cultipacker wheels.



<u>MODEL</u>	<u>DESCRIPTION</u>	<u>WIDTH</u>	<u>ROW SPACING</u>	<u># of ROWS</u>	<u>WEIGHT</u>
KVD-48	No-Till Drill. 3 Point (Cat.I)	4'	8"	6	525#
KVD-72	No-Till Drill. 3 Point (Cat.I)	6'	8"	9	1030#
KVD-96	No-Till Drill. 3 Point (Cat.I)	8'	8"	12	1375#

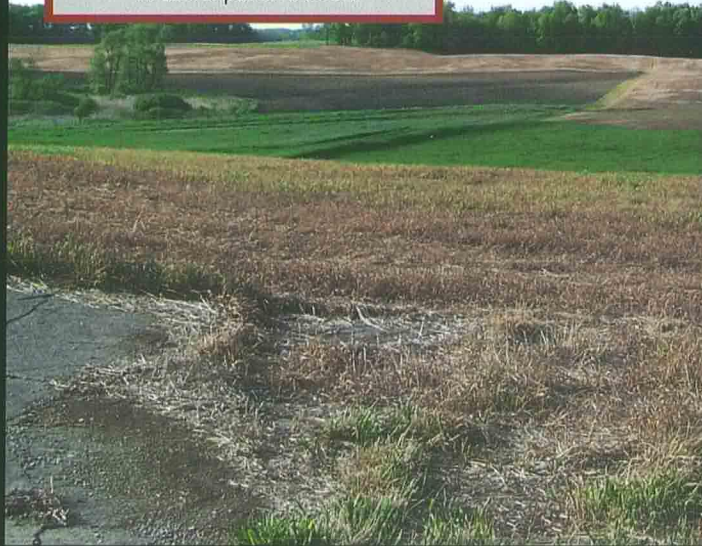


800-458-9129
www.kascomfg.com

NATIVE (Warm Season) GRASSES

Ideal for Erosion Control

The growing trend towards use of Native (Warm Season) Grasses has created a demand for a quality drill to ensure germination of this expensive seed.

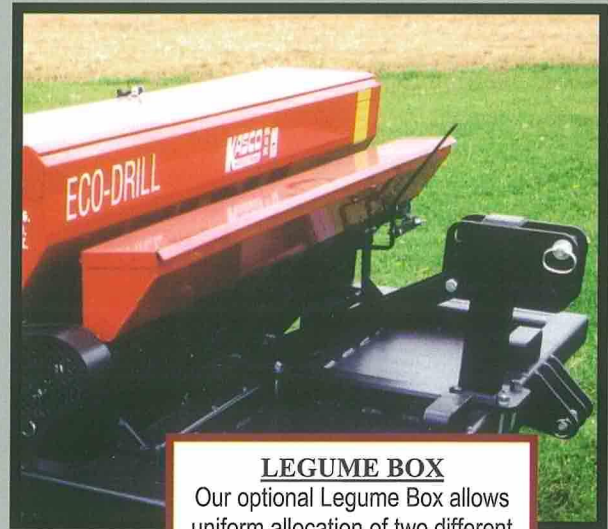


Our optional **POSITIVE FEED SEED DELIVERY SYSTEM** (patented) allows even distribution of "fluffy" prairie grass seed.

- *Bluestem*
- *Indiangrass*
- *Side Oats Grama*

PULL HITCH

The Eco-Drill is now available with an optional Pull Hitch Package.



LEGUME BOX

Our optional Legume Box allows uniform allocation of two different sized seeds at the same time.

KASCO
MANUFACTURING CO., INC.

170 West 600 North
Shelbyville, IN 46176
800-458-9129



The VERSA-DRILL

KVGT-489 4' Versa-drill for 3-Point



Ideal for use behind ATVs or smaller tractors, THE VERSA-DRILL offers unique "Walking Beam" engineering. This design allows the Drill to follow the terrain, even the most uneven, rocky, no-till conditions.

All of the VERSA-DRILL's ground-engaging components are rolling; there are no shanks to drag trash.

A True No-Till Drill, the VERSA-DRILL ensures better placement of expensive seed, rather than scattered on top like a conventional drop seeder.

LESS SEED WASTE and BETTER GERMINATION.

KVGT-728 6' Versa-Drill



<u>MODEL</u>	<u>DESCRIPTION</u>	<u>WIDTH</u>	<u>ROW SPACING</u>	<u># of ROWS</u>	<u>WEIGHT</u>
KVGT-480	No-Till Drill. 3 Point (Cat.I)	4'	10"	4	650#
KVGT-489	No-Till Drill. 3 Point (Cat.I)	4'	9"	5	700#
KVGT-728	No-Till Drill. 3 Point (Cat.I)	6'	8"	9	1225#
KVGA-480	No-Till Drill. ATV Pull Type	4'	10"	4	750#
KVGA-489	No-Till Drill. ATV Pull Type	4'	9"	5	800#

KASCO
MANUFACTURING CO., INC.

800-458-9129
www.kascomfg.com

KASCO OFFERS THE MOST COMPLETE LINE OF DRILLS AND SEEDERS ON THE MARKET TODAY!

KASCO DRILLS & SEEDERS

MODEL	NO-TILL OR WORKED	3-POINT OR PULL TYPE	SMALL SEED OR ROW	PRIMARY USES	NOTES:
ECO-DRILL					
KED-72	EITHER	EITHER	BOTH	PASTURE, ROW CROPS	Front slicing discs, rigid opening discs, and cultipacker are spring loaded. Our Heaviest Unit.
KED-96	EITHER	EITHER	BOTH	PASTURE, ROW CROPS	
VERSA-DRILL					
KVGT-480	EITHER	EITHER	BOTH	FOOD PLOTS, PASTURE	Slicing Discs and Opening Discs are mounted on a spring-loaded arm with a patented "Walking Beam" arrangement. The Rear Cultipacker is also spring-loaded. Customers concerned about rocky conditions often feel more comfortable with the spring-loaded components.
KVGT-489	EITHER	EITHER	BOTH	FOOD PLOTS, PASTURE	
KVGT-728	EITHER	3-POINT	BOTH	FOOD PLOTS, PASTURE	
KVGA-480	EITHER	EITHER	BOTH	FOOD PLOTS, PASTURE	
VALU-DRILL					
KVD-48	EITHER	3-POINT	BOTH	PASTURE, ROW CROPS, FOOD PLOTS	Single row of heavy duty openers with seed drop tubes attached. Close coupled for use on smaller tractors. Openers and Cultipackers are spring loaded for better results in rocky or uneven conditions.
KVD-72	EITHER	3-POINT	BOTH	PASTURE, ROW CROPS, FOOD PLOTS	
KVD-96	EITHER	3-POINT	BOTH	PASTURE, ROW CROPS, FOOD PLOTS	

For our complete line of seeders, including:

- The Vari-Slice overseeder
- The Plotters' Choice Food Plot Machine
- The Landscapers' Choice Primary Seeder
- The Seed-N-Pack Seeder



800-458-9129

Visit our Website at www.kascomfg.com