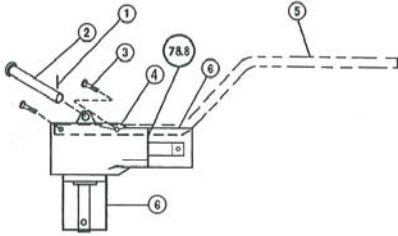
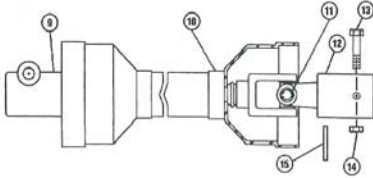


### GEAR BOX & MOUNTING PIN



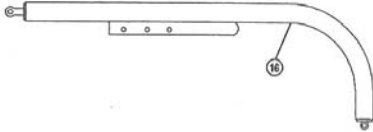
ITEM	PART #	NAME	SIZE	# REQ'D
*1	37-5949	COTTER PIN	1/8 X 2	1
*2	37-5790	CLEVIS PIN	3/4 X 6	1
3	25-5809	BOLT (optional)	3/8 x 1 1/2	2
4	40-5793-1	GEAR BOX		1
5	40-5795	POSITIONING HANDLE (optional)		1
6	24-5935	SAFETY SHIELD		2
7	25-7069	BOLT	M-8 X 12MM	4
8	26-5270	LOCK WASHER	5/16	4

### POWER TAKE OFF



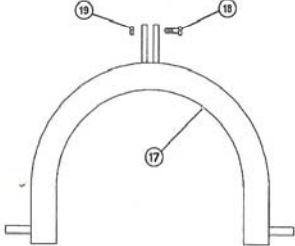
ITEM	PART #	NAME	SIZE	# REQ'D
9	34-6016	YOKE (tractor end)		1
10	34-5794	PTO SHAFT ASSEMBLY		1
11	34-6018	CROSS JOURNAL ASSEMBLY		2
12	34-6017	YOKE (gear box end)		1
*13	25-5797	SHEAR BOLT (grade 2)	5/16 x 2 1/2	1
*14	36-5887	LOCKNUT	5/16 - 18	1
*15	37-1732	ROLL PIN	3/16 x 1 1/2	1

### BOOM ASSEMBLY



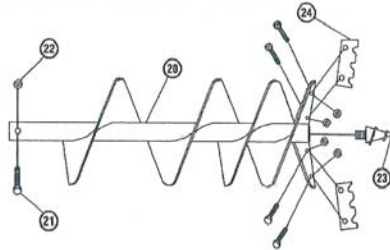
ITEM	PART #	NAME	SIZE	# REQ'D
16	40-5871	BOOM ASSEMBLY	2 7/8 PIPE	1

### U-FRAME ASSEMBLY



ITEM	PART #	NAME	SIZE	# REQ'D
17	40-5872	U-FRAME ASSEMBLY	2 7/8 PIPE	1
*18	25-5791	BOLT	3/4 X 2 3/4	1
*19	36-5792	LOCKNUT	3/4 - 10	1

### AUGER ASSEMBLY



ITEM	PART #	NAME	SIZE	# REQ'D
20	A5650-6	AUGER ASSEMBLY	6"	1
	A5650-9	AUGER ASSEMBLY	9"	1
	A5650-12	AUGER ASSEMBLY	12"	1
*21	25-4132	MOUNTING BOLT	1/2 X 3 1/2	1
*22	36-8003	FULL HEX NUT	1/2 - 13	1
23	19-10071	AUGER SPIRAL POINT	6", 9" & 12"	1
24	40-5045-6	CUTTING EDGES (weld on)	6"	1
	19-10091	CUTTING EDGE KIT	9"	1
	19-10092	CUTTING EDGE KIT	12"	1

NOTE: \*indicates item in parts bag  
Part #40-5832

### EM5000 DIGGER



Available with 6", 9", and 12" augers.  
Depth to 42"

## POST HOLE DIGGER

Our most economical digger backed by 25 years of experience

- Boom & U-Frame - 2 7/8" diameter pipe.
- Augers constructed of sturdy 1/4" flighting. Replaceable serrated edges on 9" & 12" augers only. Spiral drill tip on 6", 9" & 12" augers.
- Fits 3-point Category I linkage. Category II requires bushings.
- Durable commercial gear box with tapered roller bearings and precision gears.
- Shielded drive shaft with automotive type u-joint and quick disconnect.
- Limited warranty: 1 year on unit, 5 years on gear box.
- All post hole diggers are shipped standard with safety shields mounted to gear boxes.
- Options include: positioning handle, adjustable auger extension.

DISTRIBUTED BY:



[www.walcoequipment.com](http://www.walcoequipment.com)

HEAD OFFICE

20 ARTHUR STREET NORTH, ELMIRA, ONTARIO N3B 1Z9

TEL: (519) 669-4025 FAX: (519) 669-1436

ORDER DESK

e-mail: [orders@walcoequipment.com](mailto:orders@walcoequipment.com)

TEL: (519) 669-1401 FAX (519) 669-3499

QUEBEC OFFICE

364 RTE.122 ST.GERMAIN DE GRANTHAM, QUÉBEC JOC

TEL: (819) 395-5115 Fax (819) 395-2624

e-mail: [walcoqc@walcoequipment.com](mailto:walcoqc@walcoequipment.com)

WALCO USA

4469 292<sup>nd</sup> St. E. Box 57 Randolph MN 55065

Tel: (507) 663-9090 Fax (507) 663-0999

# Post Hole Diggers

Greenline



Available Augers:  
6", 9", 12", 14", 18"  
and 24".

Digging Depth 40"

Also 18" and 24"  
Duplex Nursery Augers

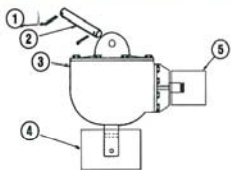


## The Greenline HM7000 POST HOLE DIGGER

### Our New Heavy Duty Digger

- Heavy Duty 3 1/2" diameter boom for the toughest jobs.
- U-Frame 2 7/8" diameter heavy wall pipe.
- Augers constructed of heavy duty 1/4" thick sectional flighting. Replaceable serrated cutting edges and spiral drill tip.
- Fits 3-point Category I linkage, Category II requires bushing.
- Over sized heavy duty commercial gear box with tapered roller bearings and precision gears.
- Limited warranty: 1 year on digger, 2 years on gear box.
- Actual digger color is safety yellow.
- Options: 12" and 18" Auger Extensions

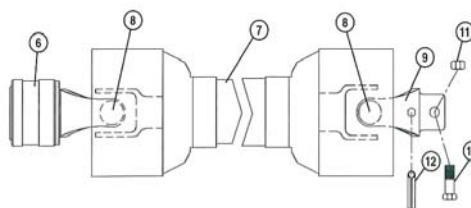
#### GEAR BOX and MOUNTING PIN



#### HM 7000 DIGGER

ITEM	PART NO.	NAME	SIZE	REQUIRED
1	37-4089	COTTER PIN	3/16 X 2	2
2	40-5818	MOUNTING PIN	3/4 X 6	1
3	40-5816	GEAR BOX ASSEMBLY		1
4	40-5942	OUTPUT SAFETY SHIELD		1
5	40-5936	INPUT SAFETY SHIELD		1

#### POWER-TAKE-OFF



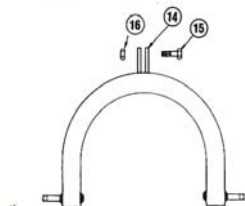
ITEM	PART NO.	NAME	SIZE	REQUIRED
6	34-6016	YOKE (tractor end)		1
7	34-5794	PTO SHAFT ASSEMBLY		1
8	34-6018	CROSS JOURNAL ASSEMBLY		2
9	34-6017	YOKE (gear box end)		1
*10	25-10135	SHEAR BOLT (Grade 2)	3/8 X 2 1/2	1
*11	36-3620	LOCKNUT	3/8 - 16	1
*12	37-1732	ROLL PIN	3/16 X 1 1/2	1

#### BOOM ASSEMBLY



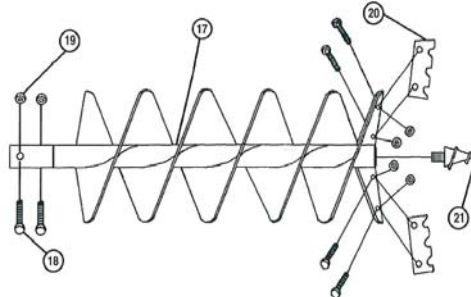
ITEM	PART NO.	NAME	SIZE	REQUIRED
13	40-5800	BOOM ASSEMBLY	3 1/2 PIPE	1

#### U-FRAME ASSEMBLY



ITEM	PART NO.	NAME	SIZE	REQUIRED
14	40-5872	U-FRAME ASSEMBLY	2 7/8 PIPE	1
*15	25-5791	BOLT	3/4 X 2 3/4	1
*16	36-5792	LOCK NUT	3/4 - 10	1

#### AUGER ASSEMBLY



ITEM	PART NO.	NAME	SIZE	REQUIRED
17	A10049	AUGER ASSEMBLY	6"	1
	A10052	AUGER ASSEMBLY	9"	1
	A10053	AUGER ASSEMBLY	12"	1
	A10054	AUGER ASSEMBLY	14"	1
	A10055	AUGER ASSEMBLY	18"	1
	A10056	AUGER ASSEMBLY	24"	1
	A5207-18	AUGER ASSEMBLY	18" DUPLEX	1
	A5207-24	AUGER ASSEMBLY	24" DUPLEX	1
*18	25-4132	MOUNTING BOLT (grade 5)	1/2-13 X 3 1/2	2
*19	36-8003	FULL HEX NUT	1/2 - 13	2
20	40-10059	CUTTING EDGE KIT	6"	1
	19-10091	CUTTING EDGE KIT	9"	1
	19-10092	CUTTING EDGE KIT	12"	1
	40-5276	CUTTING EDGE KIT	14"	1
	40-10069	CUTTING EDGE KIT	18"	1
	40-10070	CUTTING EDGE KIT	24"	1
21	19-10071	SPIRAL POINT TIP		1

NOTE: \* indicates item in parts bag  
Part #40-5833

DISTRIBUTED BY:



www.walcoequipment.com

**HEAD OFFICE** 20 ARTHUR STREET NORTH, ELMIRA, ONTARIO N3B 1Z9  
TEL: (519) 669-4025 FAX: (519) 669-1436

**ORDER DESK** e-mail: [orders@walcoequipment.com](mailto:orders@walcoequipment.com)  
TEL: (519) 669-1401 FAX (519) 669-3499

**QUEBEC OFFICE** 364 RTE.122 ST.GERMAIN DE GRANTHAM, QUÉBEC JOC  
TEL: (819) 395-5115 Fax (819) 395-2624  
e-mail: [walcoqc@walcoequipment.com](mailto:walcoqc@walcoequipment.com)

**WALCO USA** 4469 292<sup>nd</sup> St. E. Box 57 Randolph MN 55065  
Tel: (507) 663-9090 Fax (507) 663-0999

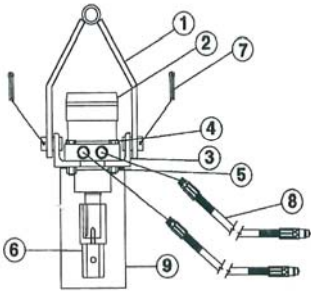


# Post Hole Diggers

Greenline

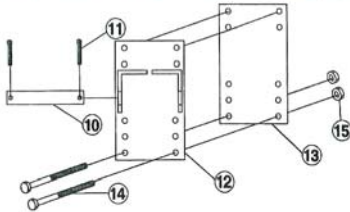
## HYDRAULIC MOTOR ASSEMBLY

## HPD2000 DIGGER



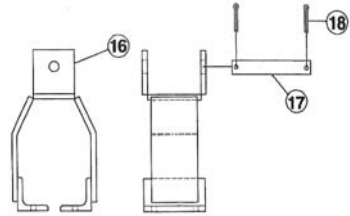
ITEM	PART #	NAME	SIZE	# REQ'D
1	41-10045	HYDRAULIC MOTOR MOUNT ASSEMBLY		1
2	34-10136	HYDRAULIC MOTOR		1
3	41-10048	EAR ASSEMBLY		2
4	25-5799	BOLT (grade 5)	1/2-13 x 3	4
5	36-8003	LOCK NUT	1/2-13	8
6	41-10250	COLLAR WITH BOLT (grade 5)	3/8-16 x 1 1/4	1
7	37-4089	COTTER PIN	3/16 x 2	2
8	34-10144	HYDRAULIC HOSE ASSEMBLY		2
9	41-10141	AUGER GUARD		1

## LOADER BRACKET MOUNT



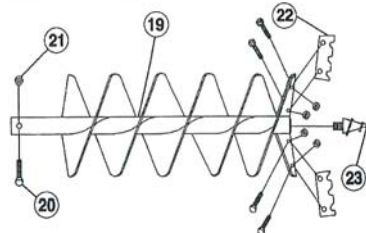
ITEM	PART #	NAME	SIZE	# REQ'D
10	41-10013	MOUNTING PIN		1
11	37-4089	COTTER PIN	3/16 x 2	2
12	41-10018	LOADER BRACKET		1
13	41-10019	LOADER BRACKET PLATE		1
*14	25-3612	BOLT (grade 5)	1/2-13 x 5 1/4	4
*15	36-8003	FULL HEX NUT	1/2-13	4

## OPTIONAL 3 PT. HITCH BOOM MOUNT



ITEM	PART #	NAME	SIZE	# REQ'D
16	41-10135	OPTIONAL BOOM MOUNT		1
17	40-5818	MOUNTING PIN		1
*18	37-4089	COTTER PIN	3/16 X 2	2

## AUGER ASSEMBLY



ITEM	PART #	NAME	SIZE	# REQ'D
19	A10049	AUGER ASSEMBLY	6"	1
	A10052	AUGER ASSEMBLY	9"	1
	A10053	AUGER ASSEMBLY	12"	1
	A10054	AUGER ASSEMBLY	14"	1
	A10055	AUGER ASSEMBLY	18"	1
	A10056	AUGER ASSEMBLY	24"	1
	A5207-18	AUGER ASSEMBLY	18" DUPLEX	1
	A5207-24	AUGER ASSEMBLY	24" DUPLEX	1
*20	25-4132	MOUNTING BOLT (grade 5)	1/2-13 x 3 1/2	2
*21	36-8003	FULL HEX NUT	1/2-13	2
22	40-10059	CUTTING EDGE KIT	6"	1
	19-10091	CUTTING EDGE KIT	9"	1
	19-10092	CUTTING EDGE KIT	12"	1
	40-5276	CUTTING EDGE KIT (4 pcs)	14"	1
	40-10069	CUTTING EDGE KIT	18"	1
	40-10070	CUTTING EDGE KIT	24"	1
23	19-10071	AUGER SPIRAL POINT		1

NOTE: \*indicates item in parts bag  
Part #40-5994



Available Augers:  
6", 9", 12", 14", 18"  
and 24".

Also 18" and 24"  
Duplex Nursery  
Augers.

Digging Depth 40"



## The Greenline HPD2000 HYDRAULIC POST HOLE DIGGER

- Mounts on all types of loaders, backhoes, farm tractors, skid steer loaders and 3 pt. hitch booms.
- Augers constructed of heavy duty 1/4" thick sectional flighting. Replaceable serrated cutting edges and spiral drill tip.
- Reversible hydraulic motor capable of 9700 in/lbs. of torque at 2000 PSI hydraulic pressure. Motor has 25 gpm max. flow rating.
- Hydraulic digger eliminates need for PTO assemblies.
- Options include: Boom mount for conventional post hole digger boom. Adjustable auger extension, 12"-18".
- Self-leveling hanger bracket insures vertical digging.
- Easily attaches to most tractor hydraulic systems.
- Warranty: 4 years

DISTRIBUTED BY:



www.walcoequipment.com

HEAD OFFICE

20 ARTHUR STREET NORTH, ELMIRA, ONTARIO N3B 1Z9

TEL: (519) 669-4025 FAX: (519) 669-1436

ORDER DESK

e-mail: [orders@walcoequipment.com](mailto:orders@walcoequipment.com)

TEL: (519) 669-1401 FAX (519) 669-3499

QUEBEC OFFICE

364 RTE.122 ST.GERMAIN DE GRANTHAM, QUÉBEC JOC

TEL: (819) 395-5115 Fax (819) 395-2624

e-mail: [walcoqc@walcoequipment.com](mailto:walcoqc@walcoequipment.com)

WALCO USA

4469 292<sup>nd</sup> St. E. Box 57 Randolph MN 55065

Tel: (507) 663-9090 Fax (507) 663-0999

# Post Hole Diggers

Page 4

## Greenline

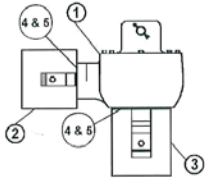


Available with 6", 9", 12" and 14" Augers

### FM5500

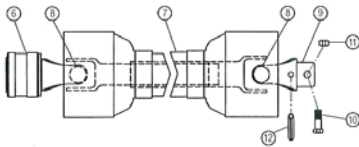
- Heavy duty commercial gearbox with 3:1 gear ratio that develops 729 ft. lbs. of torque at 180 rpm.
- Shielded drive shaft with commercial grade cross journals and quick disconnect lock ring design for tractor connection.
- Fits 3-point Category I linkage. Category II requires bushings.
- Boom and U-Frame assemblies are engineered with 2 7/8" diameter structural pipe.
- All post hole diggers are shipped complete with safety shields mounted to gearboxes.
- Augers constructed of sturdy 1/4" flighting. Replaceable serrated edges on 9", 12" and 14" augers. Spiral drill tip in 6", 9", 12" & 14" augers.
- Limited warranty: 1 year on unit, 5 years on gear box.
- Optional adjustable auger extension and positioning handle.

#### GEAR BOX & MOUNTING PIN



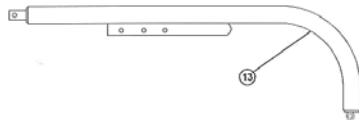
ITEM	PART #	NAME	SIZE	# REQ'D
1	40-6011	GEAR BOX ASSEMBLY		1
2	40-5936	SAFETY SHIELD INPUT		1
3	40-5937	SAFETY SHIELD OUTPUT		1
4	25-10674	BOLT (grade 5)	5/16-18 X 1/2	6
5	26-5270	LOCK WASHER	5/16	6

#### POWER TAKE OFF



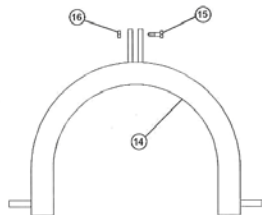
ITEM	PART #	NAME	SIZE	# REQ'D
6	34-6016	YOKE (tractor end)		1
7	34-5794	PTO SHAFT ASSEMBLY		1
8	34-6018	CROSS JOURNAL ASSEMBLY		2
9	34-6017	YOKE (gear box end)		1
*10	25-10135	SHEAR BOLT (grade 2)	3/8 x 2 1/2	1
*11	36-3620	LOCKNUT	3/8 - 16	1
*12	37-1732	ROLL PIN	3/16 x 1 1/2	1

#### BOOM ASSEMBLY



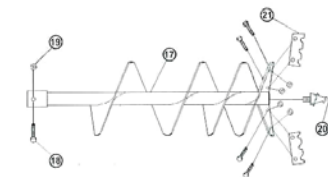
ITEM	PART #	NAME	SIZE	# REQ'D
13	40-5871	BOOM ASSEMBLY	2 7/8 PIPE	1

#### U-FRAME ASSEMBLY



ITEM	PART #	NAME	SIZE	# REQ'D
14	40-5872	U-FRAME ASSEMBLY	2 7/8 PIPE	1
*15	25-5791	BOLT	3/4 X 2 3/4	1
*16	36-5792	LOCK NUT	3/4 - 10	1

#### AUGER ASSEMBLY



ITEM	PART #	NAME	SIZE	# REQ'D
17	A 5650-6	AUGER ASSEMBLY	6"	1
	A 5650-9	AUGER ASSEMBLY	9"	1
	A 5650-12	AUGER ASSEMBLY	12"	1
	A 5650-14	AUGER ASSEMBLY	14"	1
*18	25-4132	MOUNTING BOLT	1/2 X 3 1/2	1
*19	36-8003	FULL HEX NUT	1/2 - 13	1
20	19-10071	SPIRAL POINT TIP	6", 9", 12" & 14"	1
21	40-5045-6	CUTTING EDGES (weld on)	6"	1
	19-10091	CUTTING EDGE KIT	9"	1
	19-10092	CUTTING EDGE KIT	12"	1
	40-5276	CUTTING EDGE KIT	14"	1

NOTE: \* indicates item in parts bag

DISTRIBUTED BY:



[www.walcoequipment.com](http://www.walcoequipment.com)

HEAD OFFICE

20 ARTHUR STREET NORTH, ELMIRA, ONTARIO N3B 1Z9

TEL: (519) 669-4025 FAX: (519) 669-1436

ORDER DESK

e-mail: [orders@walcoequipment.com](mailto:orders@walcoequipment.com)

TEL: (519) 669-1401 FAX (519) 669-3499

QUEBEC OFFICE

364 RTE. 122 ST. GERMAIN DE GRANTHAM, QUÉBEC JOC

TEL: (819) 395-5115 Fax (819) 395-2624

e-mail: [walcoqc@walcoequipment.com](mailto:walcoqc@walcoequipment.com)

WALCO USA

4469 292<sup>nd</sup> St. E. Box 57 Randolph MN 55065

Tel: (507) 663-9090 Fax (507) 663-0999