

BRUSH FIRE

PUT SOME
TEETH
INTO IT

BAUMALIGHT™

THE RIGHT
EQUIPMENT



CUTTING SYSTEM



**300
SERIES**



300 SERIES FEATURES

These little monsters bring the brush torturing performance of Brush Fire to smaller carriers. Designed to make the most of lower hp and flow, the 300 series have what it takes to get the job done. The cutting system was redesigned to focus on the needs of smaller carriers. Like all Brush Fires the 300 series have rows and rows of teeth laid out in a staggered spiral.

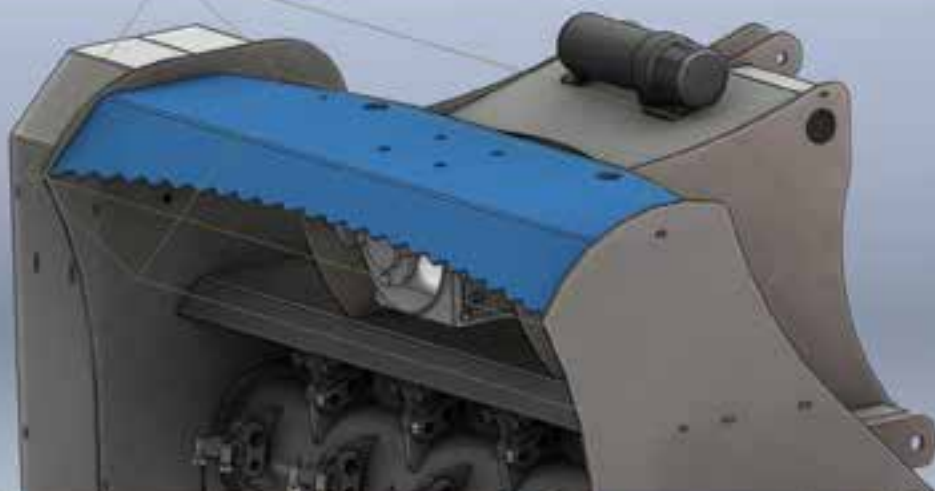
- 300 Series Features



Green Teeth

The concave shaped carbide tip provides aggressive brush mulching action by chipping the brush bit by bit. Part of the secret of their performance is always having a sharp edge to make mulching easier. Sharper edges result in more aggressive cutting on low flow. These round carbide tipped teeth are like having 3 teeth in one. Just loosen the lock nut, turn the tooth, tighten and tear back into the brush. It takes only seconds to sharpen the tooth this way and the tooth can be rotated up to three times to provide renewed cutting performance. This gives you 3 times the wear, letting you tear into brush 3 times longer.

The tool holders are left or right positional and are designed to work in pairs. Being bolt on replaceable in case of damage makes servicing quick and easy without special tools and can even be done in the field.



Integrated Brush Bar

When push comes to shove the integrated brush bar helps control the brush and bend taller brush for easier mulching.



Integrated Skid Shoes

These durable skid shoes help the Brush Fire to better float over the ground for optimal mulching action.



3-POINT HITCH



The 3 series PTO powered Brush Fire bring large scale clearing power to small scale tractors. Perfectly matched to your 25-50 HP tractor and mounting on your category 1 Three point hitch. These hungry little beasts are ready to clean up your property. The tractor PTO is harnessed through a heavy-duty gear box and released on unwanted brush through the devouring teeth. Blaze a trail, tame shrubs, turn this team loose on brush and watch it disappear.



| | | |
|-----------------------|---------------|-----------------|
| Model No. | MP348 | MP360 |
| Path Width | 60" | 72" |
| Rotor Width | 48" | 60" |
| Maximum Engine HP | 45 HP | 50 HP |
| Minimum Engine HP | 25 HP | 30 HP |
| Cutting Depth | Level | Level |
| Number of Cutters | 60 | 74 |
| Slashes Per Second | 3600 | 4000 |
| Hitch Type | 3-Point Hitch | 3-Point Hitch |
| Hitch Size | CAT I | CAT II |
| System Protection | Slip Clutch | Slip Clutch |
| Shipping Size (LxWxH) | 62"x 48"x 40" | 78" x 48" x 40" |
| Unit Weight | 1050 LBS. | 1200 LBS. |



BRUSH IT AWAY!



PTO Drive | Maximum Brush Cutting Sizes

| Gear Selection | Operation | 25 Engine HP | 30 Engine HP | 40 Engine HP | 55 Engine HP | 60 Engine HP |
|----------------|---------------|--------------|--------------|--------------|--------------|--------------|
| Hydrostatic | Slow Reverse | 1" Brush | 1.5" Brush | 2" Brush | 2.5" Brush | N/A* |
| | Stop and Chew | 1.5" Brush | 2" Brush | 3" Brush | 4" Brush | N/A* |

*NOTICE: This value must never be exceeded or warranty is voided.

BRUSH FIRE

SKID STEER

MS 348

When you are on a budget for hydraulic power, the MS348 gets you to the bottom line. Designed for skid steers with flows between 12 and 20 GPM, this Brush Fire is ready to tear it up. Ruggedly built and ready to clear a path through brush up to 2" in diameter, be glad this Brush Fire is on your side.



Specifications

| | |
|-----------------------|-----------------|
| Model No. | MS348 |
| Path Width | 60" |
| Rotor Width | 48" |
| Maximum Engine HP | Check GPM & PSI |
| Minimum Engine HP | 30 HP |
| Cutting Depth | Level |
| Number of Cutters | 60 |
| Slashes Per Second | 800 - 1200 |
| Hitch Type | Skid Steer |
| Hitch Size | Universal |
| System Protection | Built-in Relief |
| Shipping Size (LxWxH) | 62" x 40" x 40" |
| Unit Weight | 950 LBS. |



THE RIGHT EQUIPMENT



SkidSteer | Maximum Brush Cutting Sizes

Double tree size for 'stop & chew' cutting **

| Hydraulics | Operation | 12 GPM | 15 GPM | 18 GPM | 20 GPM | 21 GPM |
|------------|--------------|---------|---------|----------|----------|--------|
| 2500 PSI | Slow Forward | 0.75" | 1" | 1.25" | 1.5" | N/A* |
| 3000 PSI | Slow Forward | 1" | 1.25" | 1.5" | 2" | N/A* |
| | RPM | 832 RPM | 924 RPM | 1088 RPM | 1215 RPM | |

**Do not double for top down mulching with excavators.

**NOTICE: This value must never be exceeded or warranty is void.





EXCAVATOR



Just when brush thought it was safely out of your reach, here comes the MX330. When paired with a Mini Excavator it won't be easy for the brush to play hard to get. With the control and precision of the excavator and the brush eliminating power of Brush Fire, mulching around objects is not a problem. In a ditch or overhead Brush Fire is coming to get it.

Excavator | Maximum Brush Cutting Sizes

Double tree size for 'stop & chew' cutting **

| Hydraulics | Operation | 12 GPM | 15 GPM | 18 GPM | 20 GPM | 21 GPM |
|------------|------------|---------|---------|----------|----------|--------|
| 2500 PSI | | 0.75" | 1" | 1.25" | 1.5" | N/A* |
| 3000 PSI | | 1" | 1.25" | 1.5" | 2" | N/A* |
| | RPM | 832 RPM | 924 RPM | 1088 RPM | 1215 RPM | |

**Do not double for top down mulching with excavators.

*NOTICE: This value must never be exceeded or warranty is void.



Specifications

| | |
|-----------------------|-----------------|
| Model No. | MX330 |
| Path Width | 38" |
| Rotor Width | 30" |
| Maximum Engine HP | Check GPM & PSI |
| Minimum Engine HP | 10 HP |
| Cutting Depth | Level |
| Number of Cutters | 36 |
| Slashes Per Second | 600 - 1000 |
| Hitch Type | Excavator |
| Hitch Size | Universal |
| System Protection | Built in Relief |
| Shipping Size (LxWxH) | 42" x 30" x 36" |
| Unit Weight | 750 LBS. |



Mounting Options

Weld any existing mount to the BAUMALIGHT flat plate, providing countless options, value and economy. Contact your nearest authorized BAUMALIGHT dealer for specific information about all other mounting systems specific to your machine.





CUTTING SYSTEM



500 SERIES

Whether you are clearing a site for further development, blazing or maintaining a trail or taming an overgrown fence row Brush Fire has an appetite for clearing the way.

Dual Staggered Spirals



Rows and Rows of Hungry Teeth

The heart of the Brush Fire system is the design of the rotor. Rows and rows of brush destroying teeth placed in Dual Staggered Spirals. Each tooth is carbide tipped and bolt on replaceable for easy servicing even in the field. The number and placement of these cutting teeth provides uncompromising mulching results of not only brush and trees but grass, vegetation and the occasional stone. Rows of teeth are mounted on staggered spiral 3/4 inch steel blades delivering a fine mulch.



- 500 Series Features

Hardened Holder

The carbon hardened tooth holders can take what they dish out. Designed to deliver brush destroying power without flinching under fire. These holders combined with the V-Notch Carbide teeth deliver a certain path to destruction for any brush standing in their way. When other holders are giving in, the 500 series push on till the battle is won.

V-Notch

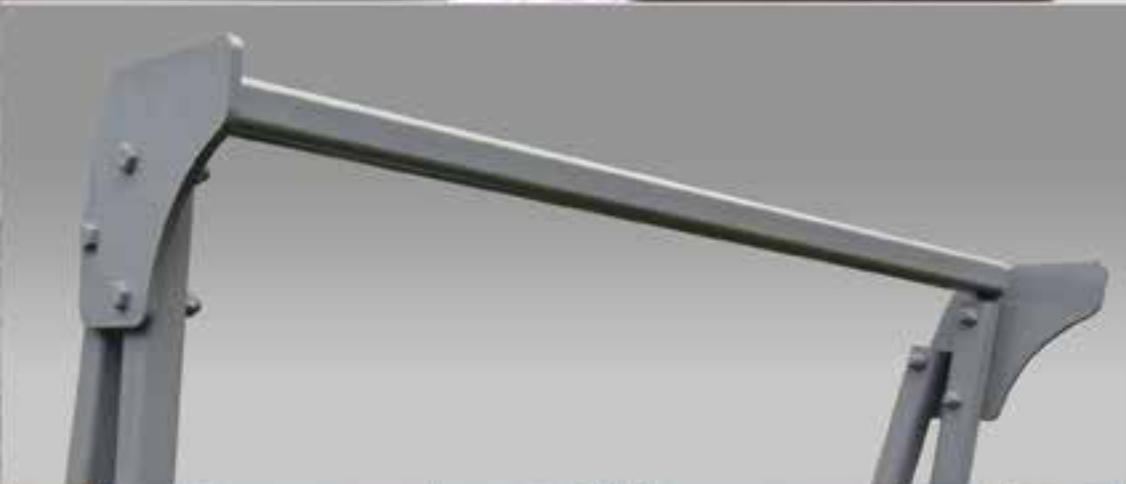
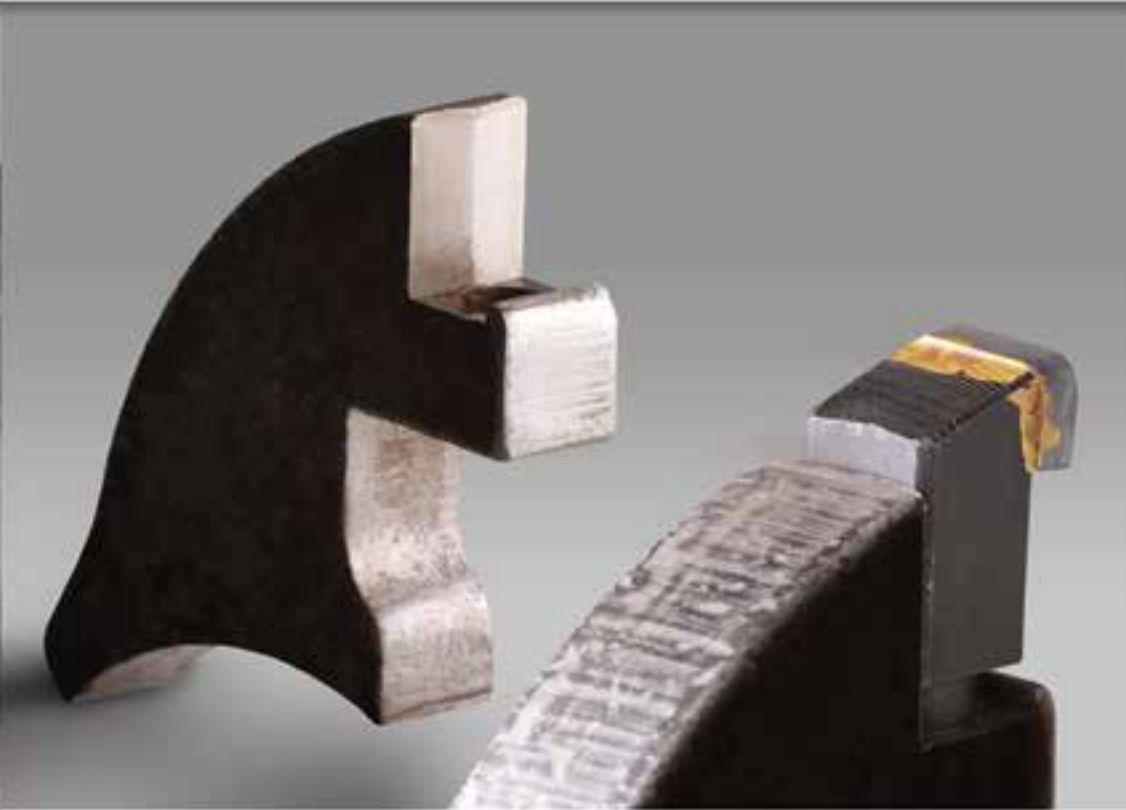
The immense forces and impacts of mulching try to bend and twist the teeth, ending their tour of duty early. Our V-Notch teeth and Hardened holders wont let that happen. Held firmly in place and able to absorb impacts from multiple directions the V-Notch keeps the teeth chewing up the toughest brush.

Brush Pusher Bar

The Brush Pusher Bar gives the brush fair warning of what is coming and pushes brush and trees away from the operator.

Adjustable Skid Shoes

These two position skid shoes allow you to adjust the cutting height for optimal clearing performance.





With direct drive from the engine all the way through the heavy duty gear box to the teeth, the MP560 delivers ultimate cutting power. This could be the greediest Brush Fire to date, when paired with the correct tractor with hydrostatic drive this hungry mulcher is ready to devour brush up to 6 inches in diameter. Its appetite is not satisfied above ground, because of the higher torque you can adjust this monster to mulch below grade. The MP560 is not limited to reverse only, drive forward over your mulch and turn it into dust. Also unique on the PTO Brush Fire is the opening cutting shield, this allows you to adjust for a better high angle of attack on bigger brush or keep it closed and control the mulch for even finer results. Trails and fence lines won't know what hit them.

Specifications

| | |
|-----------------------|------------------------------|
| Model No. | MP560 |
| Path Width | 75" |
| Rotor Width | 60" |
| Maximum Engine HP | 68 HP |
| Minimum Engine HP | 45 HP |
| Cutting Depth | 1.5" Above to 1" Below Grade |
| Number of Cutters | 126 |
| Slashes Per Second | 4620 - 8400 |
| Hitch Type | 3-Point Hitch |
| Hitch Size | CAT II |
| System Protection | Slip Clutch |
| Shipping Size (LxWxH) | 80"x 48"x 65" |
| Unit Weight | 2145 LBS. |



3-POINT HITCH

PTO Drive | Maximum Brush Cutting Sizes

| Gear Selection | Operation | 45 Engine HP | 50 Engine HP | 60 Engine HP | 68 Engine HP | 70 Engine HP |
|----------------|---------------|--------------|--------------|--------------|--------------|--------------|
| Low Gear | Slow Reverse | 1" Brush | 1.5" Brush | 2" Brush | 2.5" Brush | N/A* |
| | Stop and Chew | 1.5" Brush | 2" Brush | 3" Brush | 4" Brush | N/A* |
| Creeper | Slow Reverse | 2" Brush | 2.5" Brush | 3" Brush | 4" Brush | N/A* |
| | Stop and Chew | 2.5" Brush | 3" Brush | 4" Brush | 5" Brush | N/A* |
| Hydrostatic | Slow Reverse | 2.5" Brush | 3" Brush | 4" Brush | 5" Brush | N/A* |
| | Stop and Chew | 3" Brush | 4" Brush | 5" Brush | 6" Brush | N/A* |
| | RPM | 1800 RPM | 1800 RPM | 1800 RPM | 1800 RPM | |

*NOTICE: This value must never be exceeded or slip clutch will burn, warranty is void.

**500
SERIES**

BAUMALIGHT



DIRECT PTO DRIVE

**Ultimate Cutting Power
Opening Cutting Shield
for Better Angle of Attack**

Heavy Duty Gear Box



BAUMALIGHT

BRUSH FIRE

SKID STEER

MS 548

The MS548 is designed for low flow skid steers but it is just as hungry as the rest. Developed with motor options for flows from 12-30 GPM. For the MS548 low flow means brush punishing performance. Depending on pressure and flow matched to the correct motor, MS548 can take on brush up to 4 inches in diameter.

MS 560

The MS560 is ready to team up with midsize and large skidsteers for some serious brush clearing performance. Motor options are available to take advantage of systems with flows of 22-50 GPM and pressures from 2000 to 4000 PSI. Depending on your combination this lethal brush predator is ready to hunt down brush up to 6" in diameter. Happy hunting.





Get Results

Operator comfort and precise manoeuvres are what set apart Brush Fire skid steer models. Built with you in mind before you even get in the machine. Using industry standard quick attach and quick couplers (standard on A450 and B550 motors) your Brush Fire is hooked up in less than a minute. A Step Point with grip pad also makes getting in a whole lot easier. Once you are in the cab the full controls are at your command. The easily viewable gauges give you the information you need to optimize your cutting results. The hydraulic system is designed with flex couplers to prolong life by protecting the motor bearing. The super strength timer belt is designed to drive the rotor without slipping, while the built in relief valves protect the system all without the need to stop and change a shear pin. The hydraulic driven Brush Fire allows the skidsteer to move slowly if the terrain and obstacles demand it, without compromising the clearing performance. Mounted on the boom the Brush Fire can reach high and hungrily mulch down from the top. The view of the action is right in front of you, so sit back relax and prepare to lay waste to whatever is in your path.

SKID STEER

- Easily Viewable Gauges
- Full Control from Operators Seat
- Step Point and Grip Pads
- Powerful Mulching on Low Flow

- Bearing Protection
- Super Strength Timer Belt





EXCAVATOR



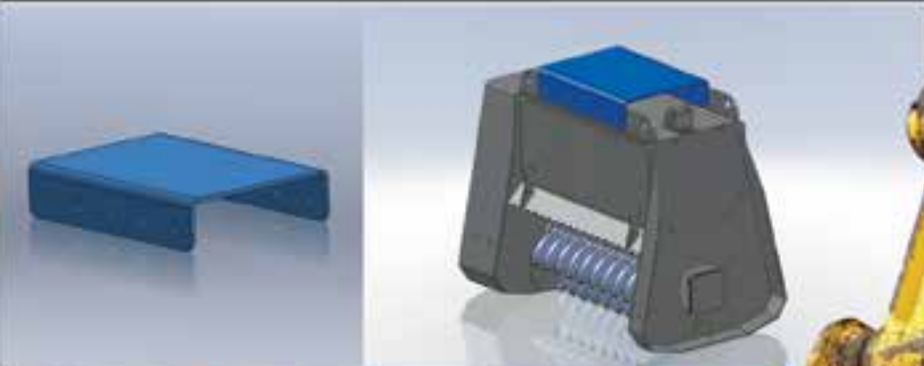
STRIKE FORCE

Precision Strike Force is the term that best describes the MX530 and MX548. These excavator versions of the Brush Fire brings together power and precise control. Search and destroy, paired with an excavator an operator can mulch around objects reducing casualties of innocent bystanding trees while removing the cumbersome brush. Excavators can also go where tractors and skid steers fear to tread. This gives you greater access to areas that have had to be cleared by hand in the past. Clearing stubborn brush from steep ditches from the comfort and safety of the level ground. Reaching over and around objects is no problem with the proven brush clearing appetite of Brush Fire.



Mounting Options

Weld any existing mount to the BAUMALIGHT flat plate, providing countless options, value and economy. Contact your nearest authorized BAUMALIGHT dealer for specific information about all other mounting systems specific to your machine.





WHICH BRUSH FIRE IS RIGHT FOR ME?

Calculate GPM & PSI for Skid Steer or Excavator

Calculate for the Correct Motor Option

1. Run Skid Steer or Excavator at **FULL THROTTLE**.
2. Use **FLOW METER** to measure Gallons Per Minute (**GPM**).
3. Record **GPM** with restriction **Fully Open**.
4. Record **Tank PSI** with restriction **Fully Open**.

The best choice for you largely depends on what you plan to attach it to and what you want to do with it.

The first step is to verify the flow your machine has, then reference the motor chart. If the GPM requirements of the motor exceed the capacity of the skid steer or excavator, the performance will be less than satisfactory. On the other hand, if the motor is undersized for the capacity of the skid steer or excavator, the hydraulic motor will be subject to premature wear and the resulting back pressure will reduce motor torque, excess flow or pressure will result in failure of the motor, this condition is not covered by warranty.

**SKID STEER/EXCAVATOR MOUNTED MULCHER WARNING:
A SKID STEER/EXCAVATOR MUST HAVE A PROTECTIVE DOOR.**

5. High Pressure Side

| | 1000 PSI | 2000 PSI | 2500 PSI | 3000 PSI | 3300 PSI | 3500 PSI | 4000 PSI |
|---------------------|----------|----------|----------|----------|----------|----------|----------|
| GPM at Given PSI | | | | | | | |
| PSI on Tank Side | | | | | | | |
| Actual Working PSI* | | | | | | | |

*Subtract Tank PSI from High Pressure side.

Specifications

| Model No. | MS548 | MS560 | MX530 | MX548 |
|-----------------------|------------------------------|-----------------|-----------------|-----------------|
| Path Width | 62" | 75" | 40" | 62" |
| Rotor Width | 48" | 60" | 30" | 48" |
| Maximum Engine HP | Check GPM & PSI | Check GPM & PSI | Check GPM & PSI | Check GPM & PSI |
| Minimum Engine HP | 45 HP | 60 HP | 18 HP | 35 HP |
| Cutting Depth | 1.5" Above to 1" Below Grade | | | |
| Number of Cutters | 104 | 126 | 64 | 104 |
| Slashes Per Second | 2750 - 6700 | 4620 - 8400 | 2400 - 4000 | 3250 - 8800 |
| Hitch Type | Skid Steer | Skid Steer | Excavator | Excavator |
| Hitch Size | Universal | Universal | Universal | Universal |
| System Protection | Built-in Relief | Built-in Relief | Built-in Relief | Built-in Relief |
| Shipping Size (LxWxH) | 64" x 44" x 44" | 56"x 78"x 60" | 44"x 31"x 44" | 40" x 72" x 40" |
| Unit Weight | 1491 LBS. | 2115 LBS. | 1036 LBS. | 2167 LBS. |

Motor Options

C-mount motors are bent axis piston motors

| MS548 | |
|-------|------|
| | A450 |
| | B550 |
| | C530 |
| | C540 |

| MS560 | |
|-------|------|
| | C530 |
| | C540 |
| | C550 |

| MX530 | |
|-------|------|
| | A450 |
| | B550 |
| | C530 |
| | C540 |
| | C550 |

| MX548 | |
|-------|------|
| | C530 |
| | C540 |
| | C550 |
| | C570 |
| | C590 |

Maximum Brush Cutting Sizes

| A450 | Hydraulics | Operation | 12 GPM | 15 GPM | 18 GPM | 20 GPM | 21 GPM |
|---|------------|--------------|------------|-------------|-------------|------------|--------|
| Double Brush Size for "Stop & Chew" Cutting** | 2500 PSI | Slow Forward | .75" Brush | 1" Brush | 1.25" Brush | 1.5" Brush | N/A* |
| | 3000 PSI | Slow Forward | 1" Brush | 1.25" Brush | 1.5" Brush | 2" Brush | N/A* |
| | | RPM | 832 RPM | 924 RPM | 1088 RPM | 1215 RPM | |

| B550 | Hydraulics | Operation | 12 GPM | 20 GPM | 22 GPM | 26 GPM | 27 GPM |
|---|------------|--------------|------------|------------|-------------|-------------|--------|
| Double Brush Size for "Stop & Chew" Cutting** | 2500 PSI | Slow Forward | .75" Brush | 1.5" Brush | 1.75" Brush | 2.25" Brush | N/A* |
| | 3000 PSI | Slow Forward | 1" Brush | 2" Brush | 2" Brush | 2.5" Brush | N/A* |
| | | RPM | 693 RPM | 1201 RPM | 1324 RPM | 1490 RPM | |

| C530 | Hydraulics | Operation | 16 GPM | 22 GPM | 25 GPM | 30 GPM | 35 GPM |
|---|------------|--------------|------------|-------------|------------|------------|--------|
| Double Brush Size for "Stop & Chew" Cutting** | 2500 PSI | Slow Forward | 1" Brush | 2.25" Brush | 2.5" Brush | 4" Brush | N/A* |
| | 3000 PSI | Slow Forward | 1.5" Brush | 2.5" Brush | 3" Brush | 4.5" Brush | N/A* |
| | 3500 PSI | Slow Forward | 2" Brush | 3" Brush | 3.5" Brush | 5" Brush | N/A* |
| | 4000 PSI | Slow Forward | 2.5" Brush | 3.5" Brush | 4" Brush | 5" Brush | N/A* |
| | | RPM | 1100 RPM | 1500 RPM | 1800 RPM | 2100 RPM | |

1800 rpm is optimum cutting performance.

| C540 | Hydraulics | Operation | 25 GPM | 27 GPM | 30 GPM | 35 GPM | 40 GPM |
|---|------------|--------------|------------|------------|------------|------------|--------|
| Double Brush Size for "Stop & Chew" Cutting** | 3000 PSI | Slow Forward | 3" Brush | 3.5" Brush | 4" Brush | 4.5" Brush | N/A* |
| | 3500 PSI | Slow Forward | 3.5" Brush | 4" Brush | 4.5" Brush | 5" Brush | N/A* |
| | 4000 PSI | Slow Forward | 4" Brush | 4.5" Brush | 5" Brush | 5.5" Brush | N/A* |
| | | RPM | 1500 RPM | 1700 RPM | 1800 RPM | 2100 RPM | |

1800 rpm is optimum cutting performance.

| C550 | Hydraulics | Operation | 28 GPM | 30 GPM | 35 GPM | 40 GPM | 45 GPM |
|---|------------|--------------|------------|------------|------------|------------|--------|
| Double Brush Size for "Stop & Chew" Cutting** | 3000 PSI | Slow Forward | 3.5" Brush | 4" Brush | 4.5" Brush | 5" Brush | N/A* |
| | 3500 PSI | Slow Forward | 4" Brush | 4.5" Brush | 5" Brush | 5.5" Brush | N/A* |
| | 4000 PSI | Slow Forward | 4.5" Brush | 5" Brush | 5.5" Brush | 6" Brush | N/A* |
| | | RPM | 1500 RPM | 1600 RPM | 1875 RPM | 2140 RPM | |

1800 rpm is optimum cutting performance.

| C570 | Hydraulics | Operation | 38 GPM | 40 GPM | 45 GPM | 50 GPM | 58 GPM |
|---|------------|--------------|------------|------------|------------|------------|--------|
| Double Brush Size for "Stop & Chew" Cutting** | 3000 PSI | Slow Forward | 5" Brush | 5.5" Brush | 6" Brush | 6.5" Brush | N/A* |
| | 3500 PSI | Slow Forward | 5.5" Brush | 5" Brush | 6.5" Brush | 7" Brush | N/A* |
| | 4000 PSI | Slow Forward | 6" Brush | 6.5" Brush | 7" Brush | 7.5" Brush | N/A* |
| | | RPM | 1500 RPM | 1630 RPM | 1830 RPM | 2030 RPM | |

1800 rpm is optimum cutting performance.

| C590 | Hydraulics | Operation | 48 GPM | 52 GPM | 56 GPM | 60 GPM | 75 GPM |
|---|------------|--------------|------------|------------|------------|------------|--------|
| Double Brush Size for "Stop & Chew" Cutting** | 3000 PSI | Slow Forward | 6" Brush | 6.5" Brush | 7" Brush | 7.5" Brush | N/A* |
| | 3500 PSI | Slow Forward | 6.5" Brush | 7" Brush | 7.5" Brush | 8" Brush | N/A* |
| | 4000 PSI | Slow Forward | 7" Brush | 7.5" Brush | 8" Brush | 8.5" Brush | N/A* |
| | | RPM | 1500 RPM | 1550 RPM | 1650 RPM | 1890 RPM | |

**NOTICE: Do not double for top down mulching with excavators.

*NOTICE: This value must never be exceeded or warranty is voided. Will cause equipment damage.



Sudden Shipping gets you the product in under 2 weeks.

At Baumalight we are committed to getting the right product in the hands of the customer as soon as possible. To this end we created a subsidized shipping program that allows you order and get the right equipment, usually under 2 weeks. The program is as easy as 1, 2, 3.

1 ORDER

When you are ready to order the product you request sudden shipping. Baumalight will then quote and arrange the direct shipping.

2 SHIP

As soon as the product is built to your order specifications, it is shipped direct to your dealer.

3 RECEIVE

The product arrives at dealership ready for final set up and delivery.

Check www.suddenshipping.com for up to date times



TRENCHERS



STUMP GRINDERS



AUGER DRIVES



GENERATORS



BRUSH CUTTERS



TREE SPADES



Authorized Dealer

Manufactured by: **MTB MFG. INC.**
4575 Powell Rd. Wallenstein, ON. Canada, N0B 2S0
1.866.820.7603
www.baumalight.com